

大同大學 100 學年度轉學入學考試試題

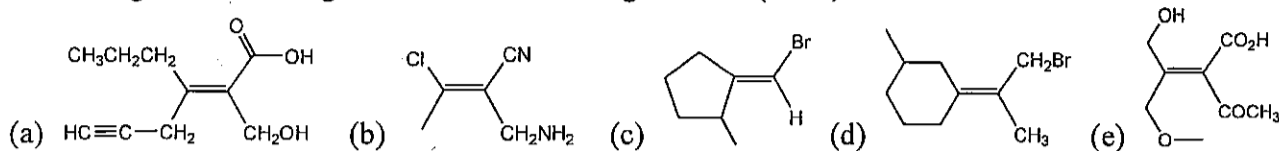
考試科目: 有機化學

所別: 化學工程學系

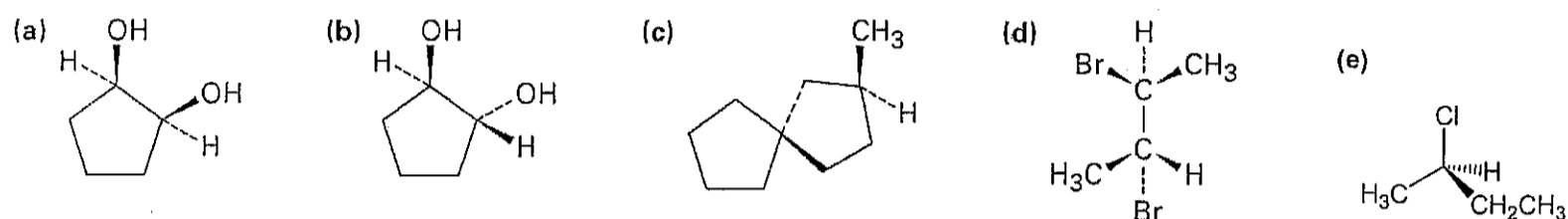
第 1/2 頁

註: 本次考試 不可以 參考自己的書籍及筆記; 不可以 使用字典; 不可以 使用計算器。

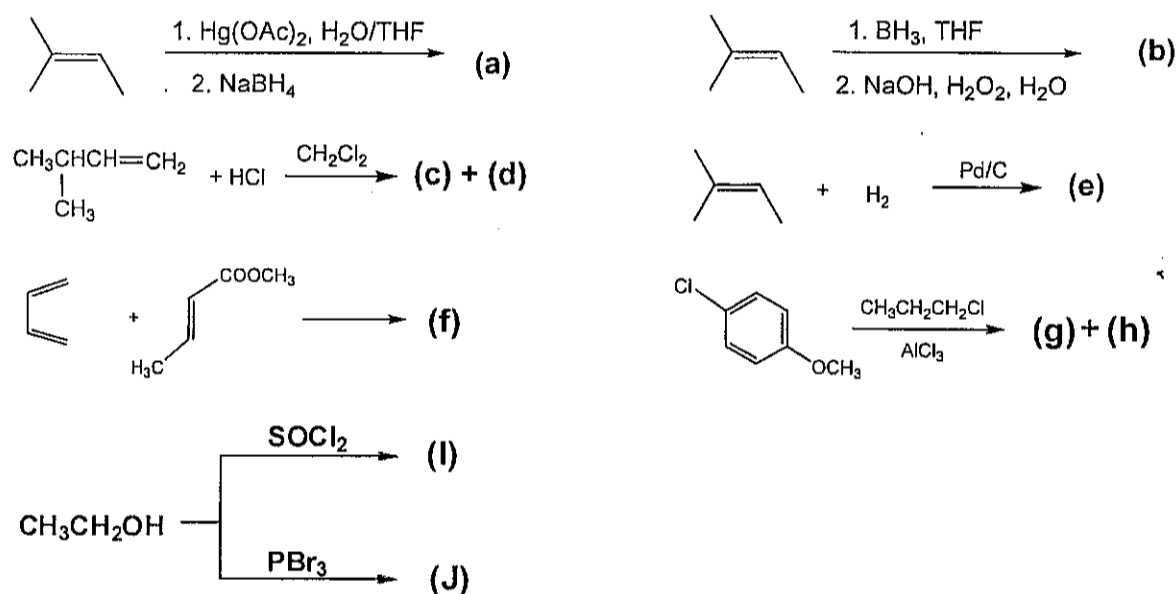
1. Assign *E* or *Z* configuration to the following alkenes. (10 %)



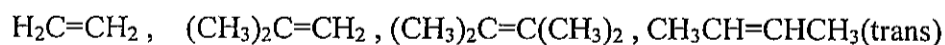
2. Assign *R* or *S* configuration to the chiral centers in each of the following molecules: (10 %)



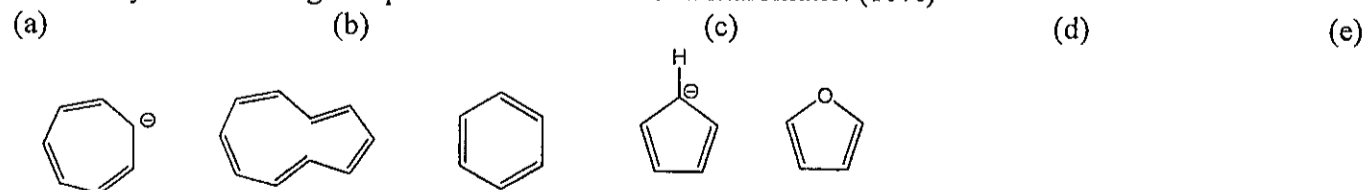
3. Give the major product of each of the following reactions: (20 %)



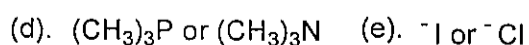
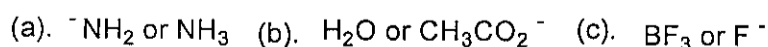
3. Rank the following alkenes in order of increasing stability. (8%)



4. Identify the following compounds are aromatic or antiaromatic. (10%)



5. Which reactant in each of the following pairs is more nucleophilic. (10%)



<背面繼續>

大同大學 100 學年度轉學入學考試試題

考試科目：有機化學

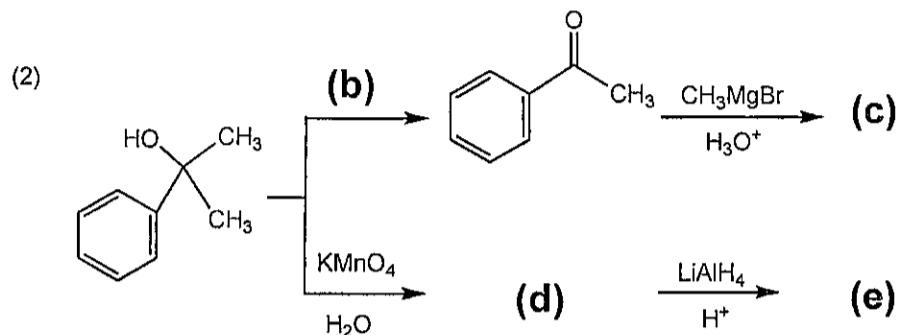
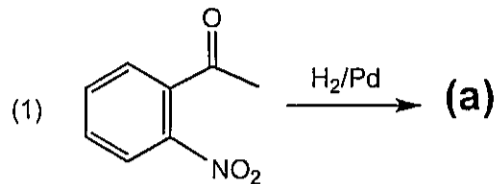
所別：化學工程學系

第 $\frac{2}{2}$ 頁

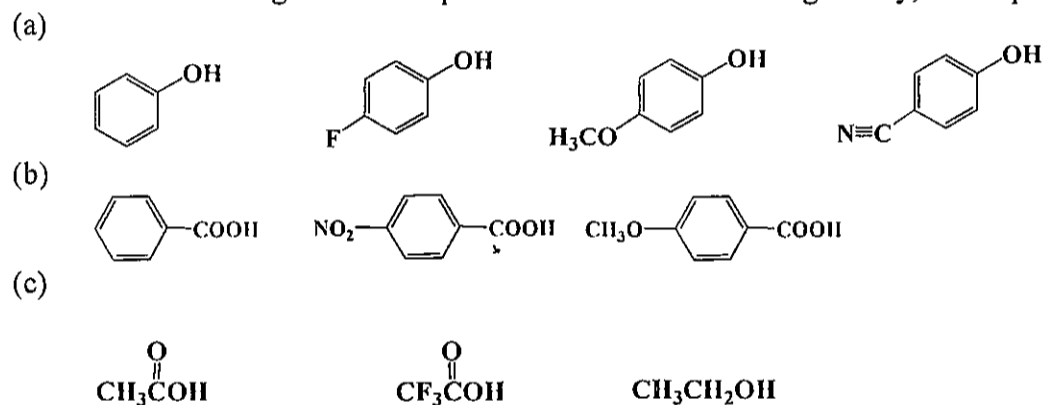
註：本次考試 不可以 參考自己的書籍及筆記； 不可以 使用字典； 不可以 使用計算器。

<接前頁>

6. What product(s) would you expect to obtain from the following reaction? (10%)



7. Rank the following substituted phenols in order of increasing acidity, and explain your answer. (10% ; 4/3/3)



8. What product(s) or reagents would you expect to obtain from the following reaction? (12%)

